

# Newsletter 11 – Autumn 2



Wistaston Academy  
Primary and Nursery School  
Together We Learn • Together We Achieve

## This Week's Events

Date	School Events	International Events
Monday		
Tuesday		
Wednesday	KS2 Sportshall athletics at South Cheshire College 12pm-4pm	
Thursday		
Friday		
<b>Advanced Notice:</b>	Walk to school week wc 4 <sup>th</sup> December	
<b>Polite Notice:</b>	<b>Please note the school office opens at 8.30am each morning and is manned until 4.30pm. Before and after these times, there will be no access to the Main Reception area.</b>	

### We are Brilliant Winners

EYFS: Joey (RA), Ethan (RB)

KS1: Nathan (1A), Freya (1B), Reggie-James (2A) Hardie-Rose (2B)

KS2: Maisie (4A) Lenny (3A) Robyn (3B), Bobby (4B)

### The Hub

The Hub children have been decorating rockets today which they have then made fly by using straws. The children always enjoy their art lessons, but especially when they get to combine it with something that really interests them, which rockets definitely does.



### Nursery

This week we have been learning about firefighters. On Thursday, we had a visit from a fire crew and we got to see the fire engine. We had a go at sitting in the fire engine, using the hose and we listened to the sirens. Nursery had a great morning. The children were fantastically behaved and the fire crew complimented how good we are!



## Reception

This week Reception have visited Queen's Park as part of our topic 'Wild in Crewe'. We have been learning all about Autumn and have loved observing the seasonal changes such as the leaves falling from the trees and the leaves changing from green to various colours of red, yellow and orange. The children enjoyed making leaf rubbing pictures with the leaves they collected, as well as autumn collages and their own natural art using loose parts.



## Year 1

This week we have been learning about 3D and 2D shapes. We started the week naming six 3D shapes and sorted them into groups. We then looked at real 3D shapes in everyday life. Next, we have begun to look at the properties of 2D shapes and discussed the similarities and differences between the shapes. We then went on a 2D shape hunt and had to record a tally for every shape we saw.





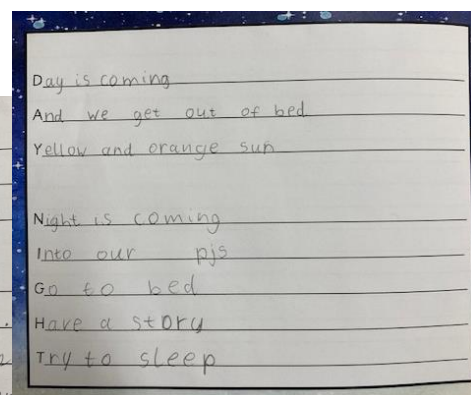
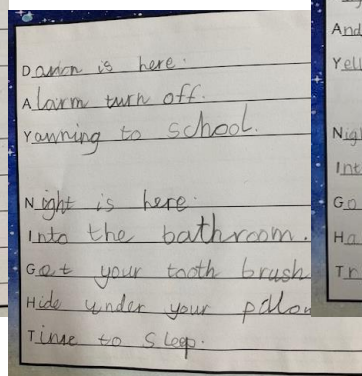
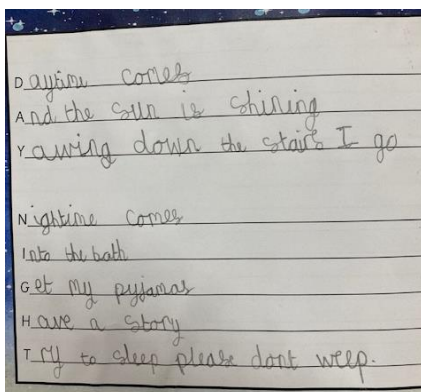
## Year 2

Year 2 went on a minibeasts hunt this week! We checked our microhabitats in school and found so many minibeasts, such as earthworms, snails and millipedes.



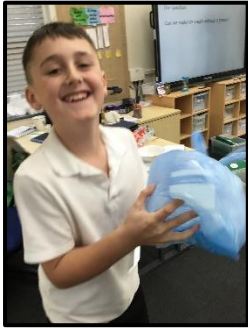
## Year 3

In Geography, year 3 have been learning all about the Earth spinning and why we have day and night. They created poems about day and night.



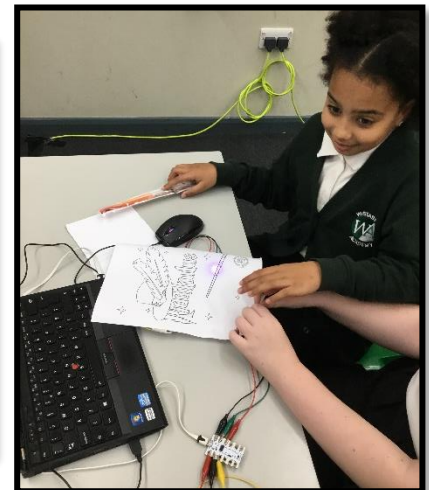
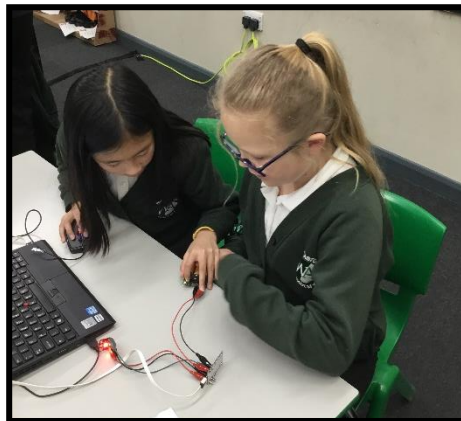
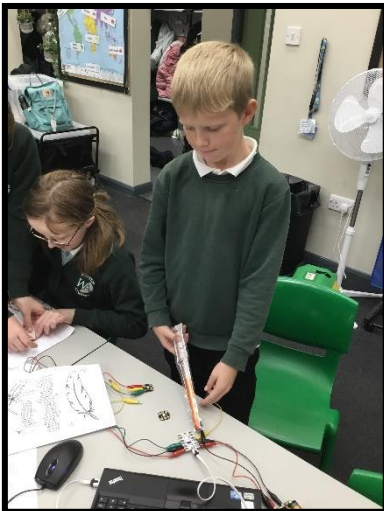
## Year 4

This week in Science, we investigated the impact of salt on ice. We considered why gritting trucks spray roads with salt mixtures during the winter. We then learned that salt lowers the freezing point of ice, so that at 0°C the ice begins to melt! We used this knowledge to try to make our own ice cream!



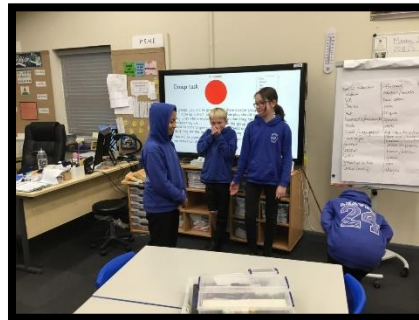
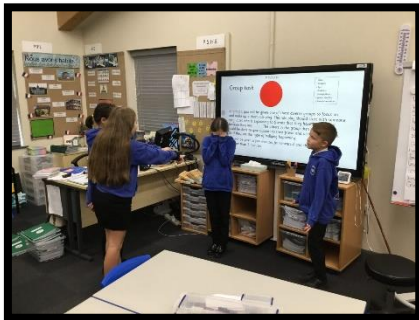
## Year 5

In computing this week, we had a visit from Dom and Rebecca who came to code with us. We programmed wands using a coding program, and then created spells which made our circuits light up. We had an amazing time exploring with different components!



## Year 6

In PSHE in Year 6, we have been focussing on valuing differences. We have talked about how we are all similar but also how we are all different. We have found positive attributes in our classmates and shared these with them. This week we completed some drama activities. In groups, we were given one diverse group to focus on and made up a short role-play. The role-play started with someone very upset who was explaining to friends that they had been bullied because they are different in one way. The others in the group then acted out what could be done to give support to their friend and also what they could do if they saw this type of bullying happening.



## PE News

Last week, we had the most amazing opportunity of watching and supporting one of our gymnastics coaches and past students, Alisha Evanson who was competing for GBR in the World Tumbling Championships. Alisha, who coaches our children at lunchtime came 5<sup>th</sup> in the final, making her the 5<sup>th</sup> finest gymnast in her category in the World! We were lucky enough to secure 15 tickets to go and support Alisha at the Birmingham Utilita Stadium. The children loved the competition and came away inspired, hoping to become champion gymnasts themselves.



Congratulations Alisha! What a privilege it is for our children to be taught by a world class athlete.



### Year 5&6 Hockey finals

On Wednesday our hockey team took part in the Crewe and Nantwich hockey finals which we qualified for back in October. The finals took place at Crewe Vagrants. Our team played fantastic hockey and there were some really close games. We finished in 4<sup>th</sup> place overall. Well done team!



### Year 3&4 Football festival

On Thursday our Year 3&4 football team took part in the Crewe and Nantwich schools football festival at the soccer centre. The team were fantastic winning 5 games and only losing one 1-0. The team had a great time and showed super teamwork and skills throughout.





### Year 4&5 girls football tournament

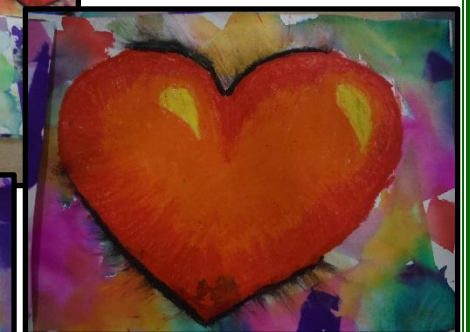
On Friday our Year 4&5 girls took part in the Crewe and Nantwich girls football tournament at the soccer centre. Our girls are loving football this year and have really improved with their skills and knowledge. The girls played brilliantly and with big smiles on their faces. Well done girls!



## Art News

### Focus on Year 4

Year 4 have been working hard to research the artist Jim Dine and have produced some lovely artist research pages in their sketchbooks. This week we completed our striking heart pictures, based on his most dominant motif, which were brightly coloured and somewhat caricatured, mirroring his "Pop-Art" style.



## Performing Art News



Our Soul Children Choir are performing soon on Sunday 3<sup>rd</sup> December at the Lyceum Theatre. If your child is planning to attend and you have not yet returned the response form to Mrs Walsh, please do so as soon as you can, in order to ensure their place and your adult ticket. If you require more than 1 adult/ family ticket, they must be purchased at the Lyceum Theatre Box Office for £4.

Please also let Mrs Walsh know about whether your child will attend our performance at the Nantwich Football Stadium on Sunday 10<sup>th</sup> December and at "The Big Sing" in Manchester on Sunday 17<sup>th</sup> December, if you have not already done so ☺

These are the links so your children can practise at home:

1. Can't wait for Christmas Day: <https://www.youtube.com/watch?v=DbBBqYPfK8E>
2. Peace in the Manger: [https://www.youtube.com/watch?v=xl\\_luq-ggkg](https://www.youtube.com/watch?v=xl_luq-ggkg)
3. All the angels sing: <https://www.youtube.com/watch?v=LReUDui-GZ0>
4. Christmas medley: <https://www.youtube.com/watch?v=Oo5-51U8YnA>
5. O Holy Night: <https://www.youtube.com/watch?v=PH-8AL7IIP8>

Please encourage your child to practise at home – we want to be the best we can be!

**REHEARSAL PLAN**

<b>Friday Lunchtimes</b> <b>School Choir</b> (12pm–12:30pm Art Room)	<b>Tuesday Evening</b> <b>Community Choir</b> (4:30pm–5:30pm–Art Room)
<b>3rd November</b>	<b>7th November</b>
<b>10th November</b>	<b>14th November</b>
<b>17th November</b>	<b>21st November</b>
<b>24th November</b>	<b>28th November</b>
<b>1st December</b>	<b>5th December</b>
<b>8th December</b>	<b>12th December</b>
<b>15th December</b>	

Please contact Mrs Walsh with any questions.

The logo for 'soul children crewe & nantwich' is repeated at the bottom of the poster, featuring the same blue star icon as above.

## Maths News



As well as **Numbots** and **TTRS**, you can also download a game from White Rose Maths. Designed for use both in class and at home, the **1-minute maths app** helps children build greater number confidence and fluency. It's all about targeted practice in engaging, one-minute chunks! Available from your app store.

Logging on for just a few minutes each day will make a massive difference to their basic number/times tables skills.



## Attendance Wk - 13.11.23 – 17.11.23

Target 96%

3A = 97.1%  
**3B = 98.6%** 😊  
4A = 93.7%  
4B = 98.3%  
5A = 90.7%  
5B = 97.3%  
6A = 91.1%  
6B = 97.6%



KS2 for the week = **95.6%** 😞  
Whole school attendance for the academic year – **96.09%** 😊

---

## Attendance Wk 13.11.23 – 17.11.23

Target 96%

Reception A – 91.3%  
Reception B – 93.1%  
1A – 99%  
1B – 96.9%  
2A - 97.3%  
**2B – 99.3%** 😊



KS1 Attendance for last week - **96.1%** 😊  
Whole school attendance for the academic year – **96.09%** 😊

---